

**1** How many lines are on a single staff? \_\_\_\_\_

**2** How many spaces are on a single staff? \_\_\_\_\_

**3** Is the 5th line at the bottom or top of the staff?  
\_\_\_\_\_

**4** Which clef is also known as the G clef? \_\_\_\_\_

**5** The note names of the five lines in the treble clef from bottom to top are:  
\_\_\_\_\_

**6** The note names of the four spaces in the treble clef from bottom to top are:  
\_\_\_\_\_

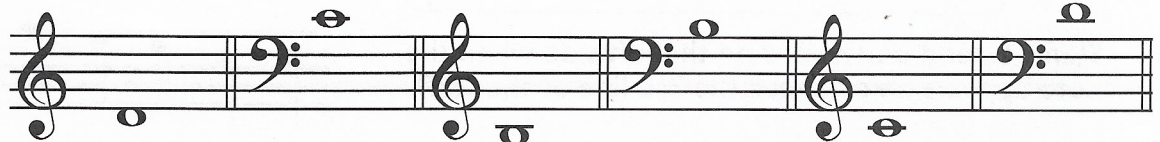
**7** The line through middle C is called a \_\_\_\_\_ line.

**8** Which clef is also known as the F clef? \_\_\_\_\_

**9** The note names of the five lines in the bass clef from bottom to top are:  
\_\_\_\_\_

**10** The note names of the four spaces in the bass clef from bottom to top are:  
\_\_\_\_\_

**11** Write the letter names of the notes.



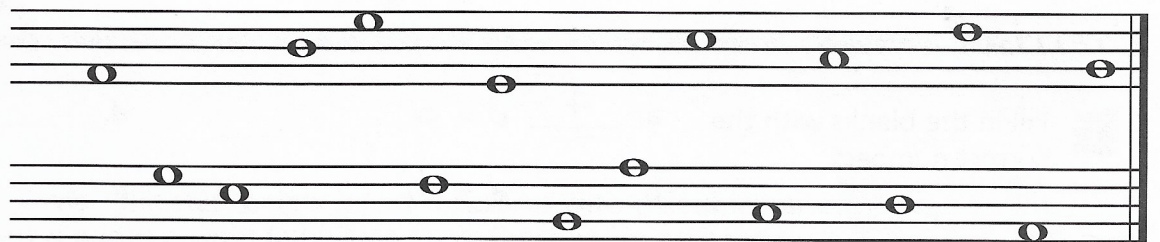
a. \_\_\_\_\_ b. \_\_\_\_\_ c. \_\_\_\_\_ d. \_\_\_\_\_ e. \_\_\_\_\_ f. \_\_\_\_\_

**12** Write the letter names of the notes.



\_\_\_\_\_

**13** Draw the grand staff and name the notes.

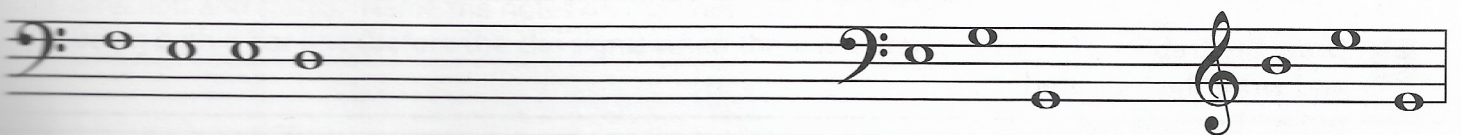


\_\_\_\_\_

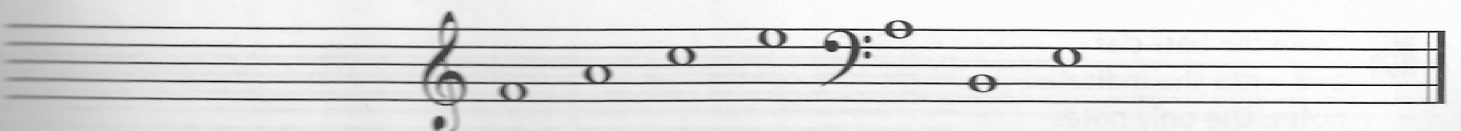
**14** Spell the words to complete the sentences below.



\_\_\_\_\_ took his lunch \_\_\_\_\_ and went downtown in a \_\_\_\_\_ to



\_\_\_\_\_ the pigeons in the park. While eating his \_\_\_\_\_ sandwich, a \_\_\_\_\_




flew by and barely missed his \_\_\_\_\_ decided to go home.


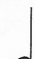


Fill in the correct number:

1  = 

2  = 

3  =  + 

4 The duration of a  is (circle one) longer or shorter than a 

5 When the notes are written on or above the 3rd line of the staff, stems extend (circle one) upward or downward on the left side of the notehead.

6 Music is divided into equal parts by \_\_\_\_\_.


7 A \_\_\_\_\_ is written at the end of a piece of music.


8 The upper number of the time signature indicates how many \_\_\_\_\_ are in each measure.


The bottom number of the time signature indicates what type of note receives \_\_\_\_\_ beat.

9 When a time signature contains a 4 as the top number, it means \_\_\_\_\_ beats in each measure.

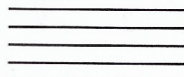
When a time signature contains a 4 as the bottom number, it means a \_\_\_\_\_ note receives \_\_\_\_\_ beat.

10  is called a \_\_\_\_\_. In  $\frac{4}{4}$  time, rest for \_\_\_\_\_ beats.

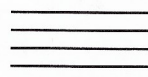
 is called a \_\_\_\_\_. In  $\frac{4}{4}$  time, rest for \_\_\_\_\_ beats.

 is called a \_\_\_\_\_. In  $\frac{4}{4}$  time, rest for \_\_\_\_\_ beat.

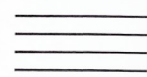
11 Draw 4 quarter rests on the staff:



Draw 2 half rests on the staff:



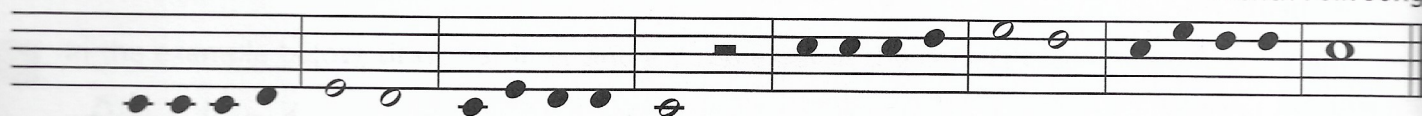
Draw 1 whole rest on the staff:



12 In the example below, draw a treble clef and  $\frac{4}{4}$  time signature. Add the stems where necessary and write the beats under the notes.

Au Claire de la Lune

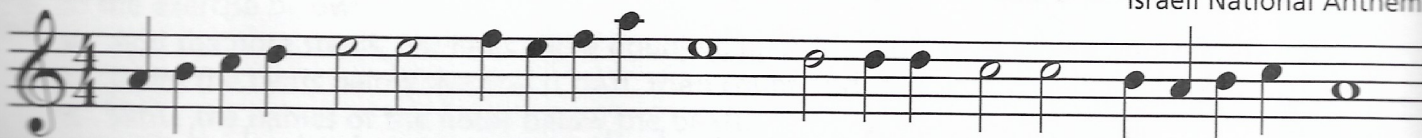
French Folk Song



13 Add bar lines and a double bar to the example below. Count and clap; say and clap. Write the names of the notes below the staff.

Hatikvah

Israeli National Anthem



14 Fill in the missing beats with notes in the 2nd space by adding only one note in each measure.



Fill in the missing beats with rests by adding only one rest in each measure.

